

Taurus Series Multimedia Players

V1.0.0 NS120100924



SNMP Test Guide

Contents

CONTENTS	I
1 ABOUT THIS DOCUMENT	1
2 PREPARATION	2
2.1 OBTAINING OID PARAMETER TABLE.....	2
2.2 INSTALLING MIB BROWSER.....	2
2.3 VIEWING IP ADDRESS OF THE TAURUS.....	2
2.4 VIEWING IP ADDRESS OF PC.....	2
3 CONNECTING TO TERMINALS.....	4
4 SNMP TEST	5
4.1 TESTING SNMP GET	5
4.2 TESTING SNMP SET	5
4.3 TEST SNMP TRAP	6

XI'AN NOVASTAR TECH CO.,LTD

1 About This Document

The Taurus series multimedia players can connect to customers' network management system via SNMP, allowing customers to manage and monitor the Taurus and obtain device information, Ethernet port status and quantity, status and quantity of the receiving cards loaded by each Ethernet port, hardware monitoring data, average receiving card temperature, etc.

In this document, MIB Browser is used to simulate the control computer and connected to the Taurus to test SNMP GET, SET and TRAP data.

XI'AN NOVASTAR TECH CO.,LTD

2 Preparation

2.1 Obtaining OID Parameter Table

OID parameter table allows users to view the OIDs and meanings of SNMP data. Obtain *Taurus Series Multimedia Players SNMP OID Parameter Description* from NovaStar.

2.2 Installing MIB Browser

MIB Browser is used to simulate the control computer and connected to the Taurus for SNMP data transfer. Obtain the software installation package and install MIB Browser.

2.3 Viewing IP Address of the Taurus

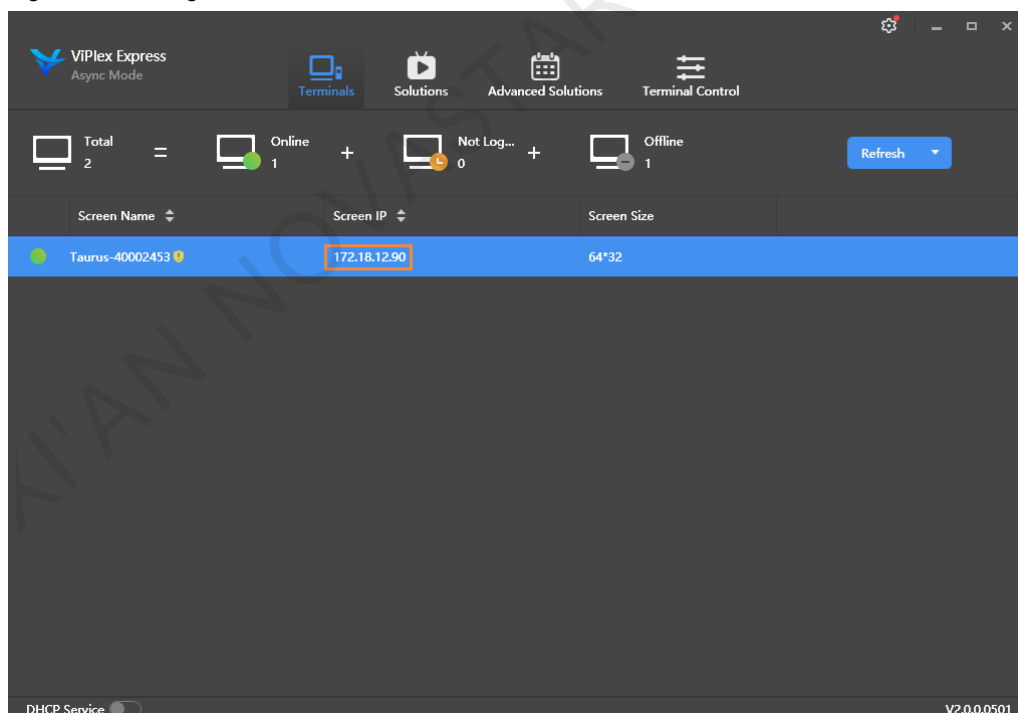
When you connect the control computer to the Taurus, the IP address of the Taurus is required. You can view the IP address with ViPlex Express. If ViPlex Express is not installed, first install it.

Step 1 Open ViPlex Express and access async playback mode.

For detailed operations, see *ViPlex Express Display Content Publishing Management System for PC Async Mode User Manual*.

Step 2 Under **Terminals**, view the IP address of the Taurus, as shown in [Figure 2-1](#).

Figure 2-1 Viewing IP address



2.4 Viewing IP Address of PC

The IP address of the control computer is required when you test SET and TRAP data. View the IP address of the PC where MIB Browser is installed.

Step 1 Press **Win+R** to open the **Run** dialog box

Step 2 Type "cmd" and press **Enter**.

Step 3 In the pop-up dialog box, type "**ipconfig**" and press **Enter**.

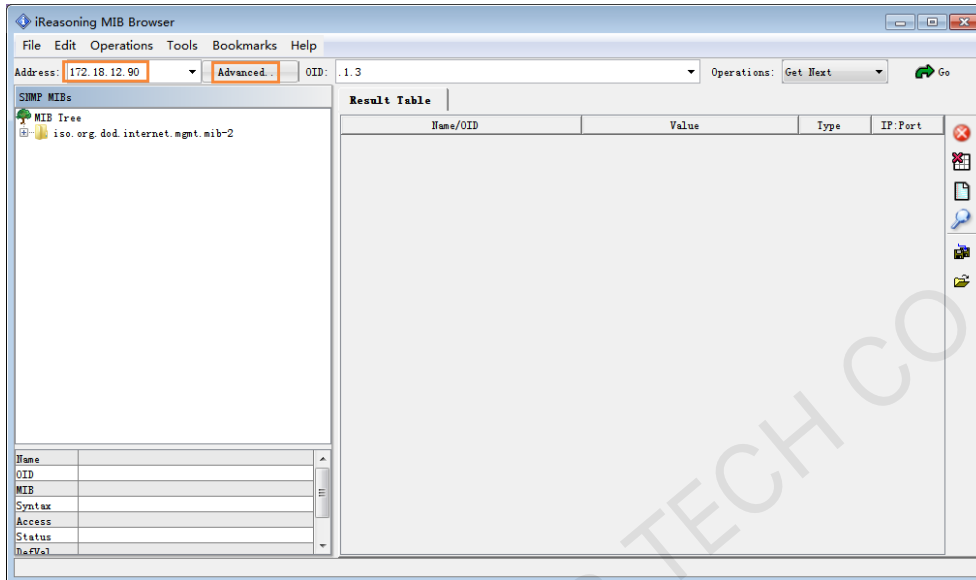
Step 4 View the IP address of the PC.

XI'AN NOVASTAR TECH CO.,LTD

3 Connecting to Terminals

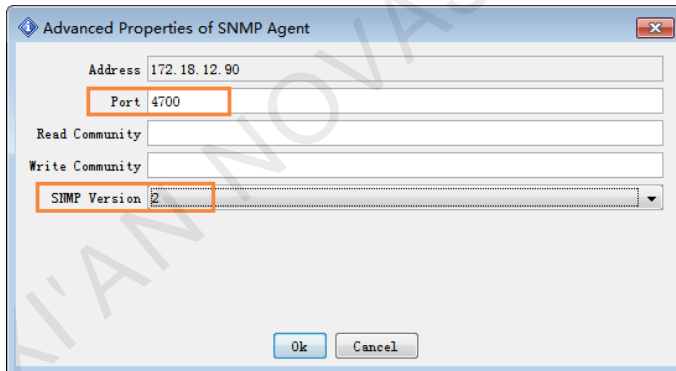
- Step 1 Connect the Taurus and PC where MIB Browser is installed to the same LAN.
- Step 2 Open MIB Browser.
- Step 3 Next to **Address**, enter the IP address of the Taurus and click **Advanced Properties of SNMP Agent**.

Figure 3-1 Configuring IP address



- Step 4 Set **Port** and **SNMP Version** to **4700** and **2** respectively and then click **OK**.

Figure 3-2 Configuring port number and SNMP version.



4 SNMP Test

SNMP data includes GET, SET and TRAP.

- GET: The control computer actively reads back data from the Taurus.
- SET: The control computer sets up the Taurus.
- TRAP: The Taurus actively reports data to the control computer.

4.1 Testing SNMP GET

Step 1 Open *Taurus Series Multimedia Players SNMP OID Parameter Description*.

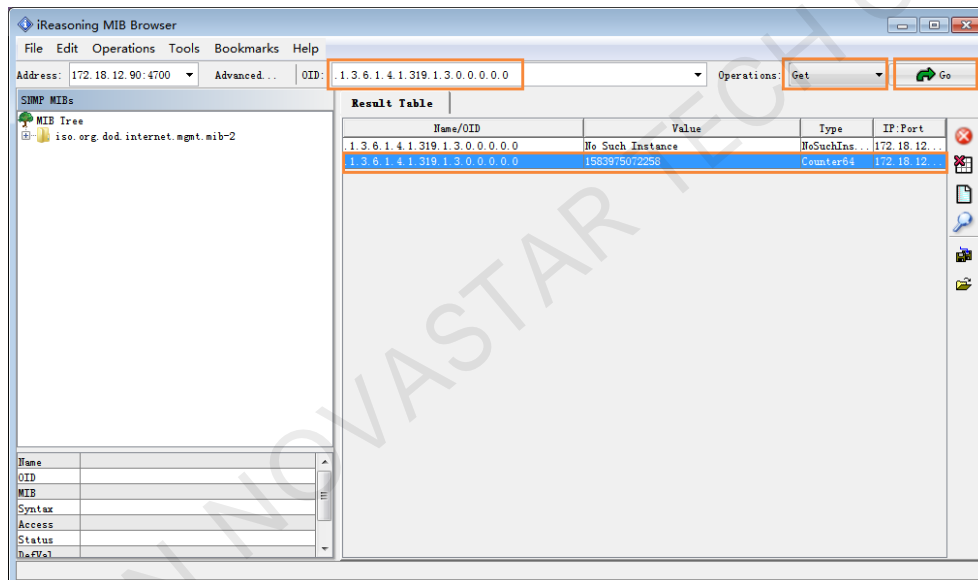
Step 2 Copy an OID of SNMP GET.

Step 3 In MIB Browser, paste the OID, set **Operations** to **Get** and then click **Go**.

MIB Browser automatically adds “.0” to the end of the OID.

After the operation is successful, the data read from the Taurus is displayed, as shown in [Figure 4-1](#).

Figure 4-1 Setting parameters-GET



4.2 Testing SNMP SET

Step 1 Open *Taurus Series Multimedia Players SNMP OID Parameter Description*.

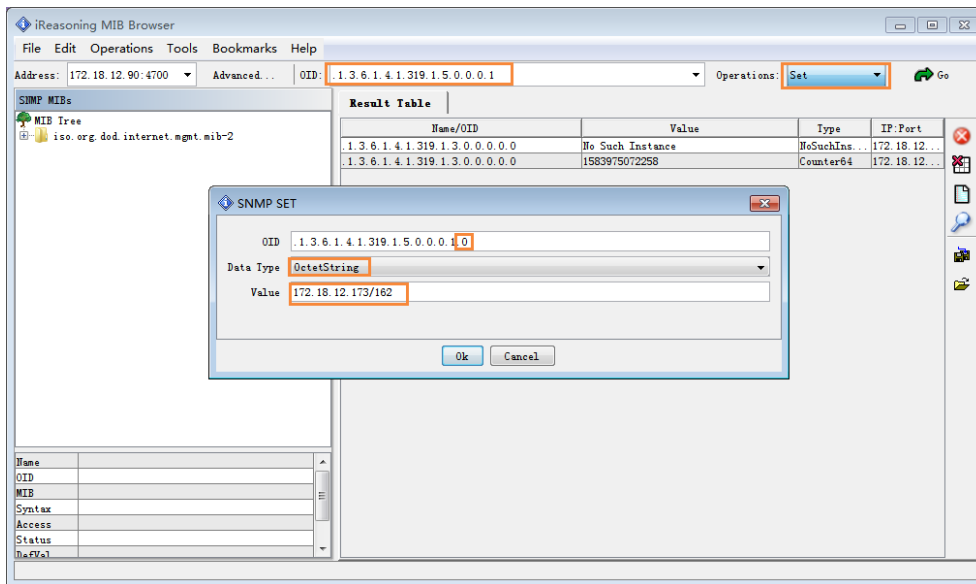
Step 2 Copy an OID of SNMP SET and view the data type.

Step 3 In MIB Browser, paste the OID, set **Operations** to **Set**.

Step 4 In the displayed dialog box, add “.0” to the end of the OID, select the data type and enter “[Control computer IP address/port number](#)”.

The port number ranges from 0 to 65535 and is not in use.

Figure 4-2 Setting parameters-SET



Step 5 Click **Ok**.

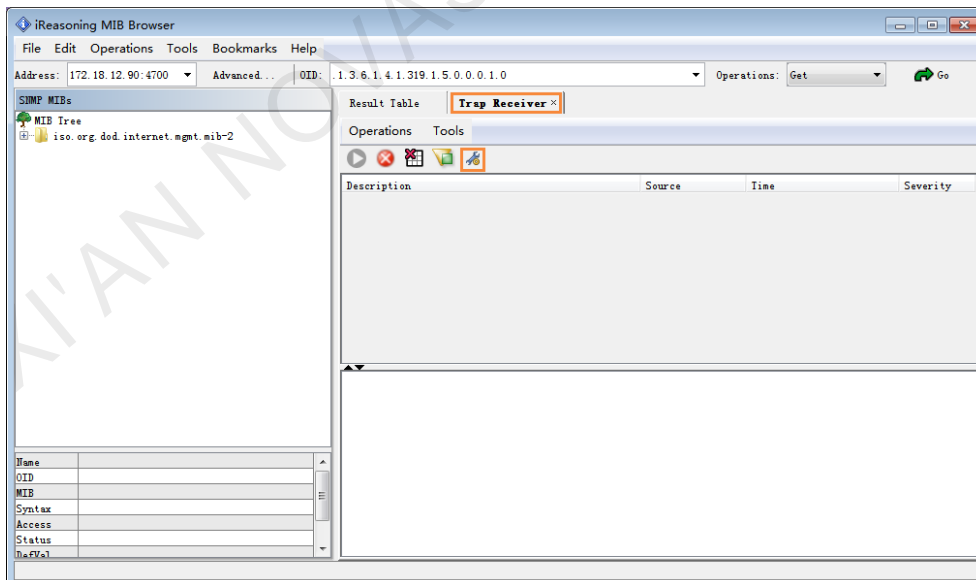
A prompt will be displayed after the operation is successful.

4.3 Test SNMP TRAP

Step 1 Set the IP address and port number of the trap computer for reporting TRAP data. For detailed operations, see [4.2 Testing SNMP SET](#).

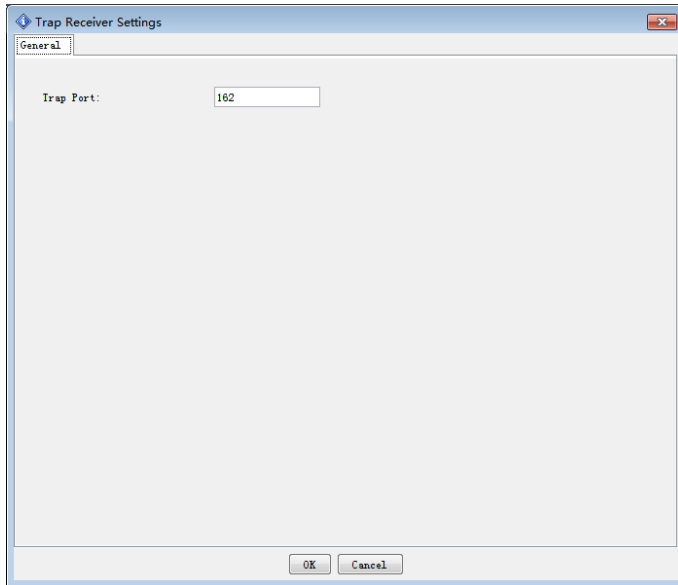
Step 2 From the menu bar, choose **Tools > Trap Receiver** and click .

Figure 4-3 Selecting function



Step 3 Set **Trap Port** to the port number of the control computer and click **OK**.

Figure 4-4 Setting parameters-TRAP



After the settings are complete, the Taurus automatically reports TRAP data to the control computer, as shown in Figure 4-5.



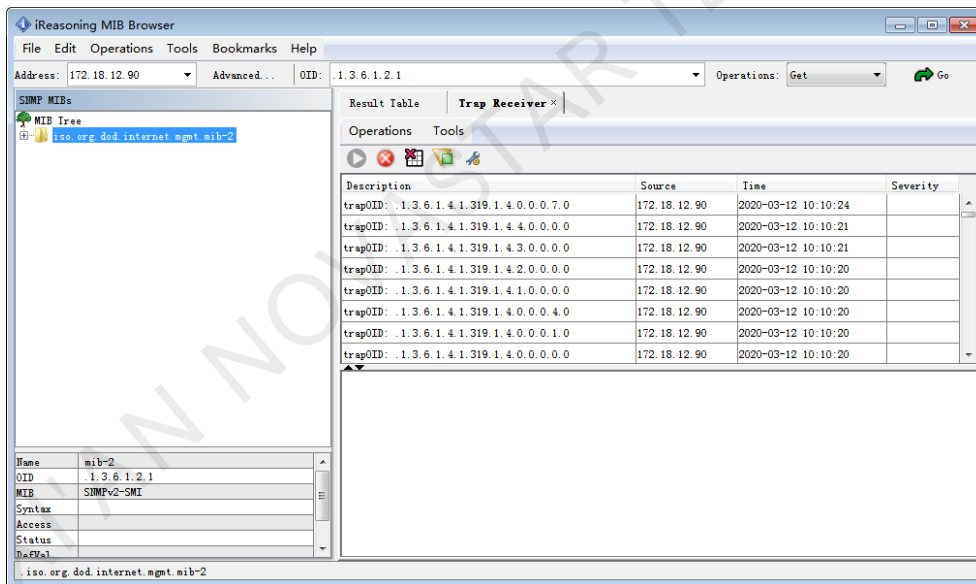
The data is reported every minute. If you want to stop reporting data, click . If you want to start reporting data again, click .

Figure 4-5 Reported data



Step 4 Open *Taurus Series Multimedia Players SNMP OID Parameter Description* and view the meanings of TRAP data according to the corresponding OIDs.

Copyright © 2020 Xi'an NovaStar Tech Co., Ltd. All Rights Reserved.

No part of this document may be copied, reproduced, extracted or transmitted in any form or by any means without the prior written consent of Xi'an NovaStar Tech Co., Ltd.

Trademark

NOVA STAR is a trademark of Xi'an NovaStar Tech Co., Ltd.

Statement

You are welcome to use the product of Xi'an NovaStar Tech Co., Ltd. (hereinafter referred to as NovaStar). This document is intended to help you understand and use the product. For accuracy and reliability, NovaStar may make improvements and/or changes to this document at any time and without notice. If you experience any problems in use or have any suggestions, please contact us via contact info given in document. We will do our best to solve any issues, as well as evaluate and implement any suggestions.

[Official website](http://www.novastar.tech)
www.novastar.tech

[Technical support](mailto:support@novastar.tech)
support@novastar.tech